



Knightia excelsa - rewarewa

Nobelius Heritage Park & Emerald Museum

Newsletter No. 6

Summer 2013

*"then followed that beautiful season...
Summer....*

*Filled was the air with a dreamy and magical
light; and the landscape lay as if new created in
all the freshness of childhood." - Henry
Wadsworth Longfellow*

Summer in the Dandenong Ranges is beautiful, whether strolling along meandering streams through cool tree fern laden gullies with mountain ash towering above or relaxing in one of the splendid parks scattered throughout the region. Visitors to Nobelius Heritage Park will notice a few improvements from last year.



Above is the striking beauty of the Illawarra Flame Tree. Located immediately in front of the museum, it is one of the parks most treasured species. Last year the tree bloomed for the first time and we are hoping for the same display this year. Unfortunately that can't be guaranteed as it is not native to this region. It is however worth keeping an eye out during January just in case.

The salvia and lavender gardens are also a sight to behold during summer, with the annual lavender harvest taking place again in January. For those interested in salvias, please contact : Lindi Garnett on highcon@hotmail.net.au

Saturday 11th January at 10.00am

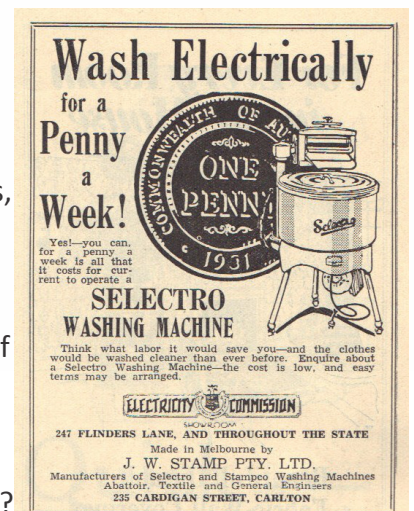
LAVENDER HARVEST



After last years success, this year we again plan to harvest our English lavender on a Saturday early in January. A working bee will take place and a good turn out is expected again.

Join us and for a small donation you can take some home to freshen your linen press just as our grandmothers did. Bring secateurs, a hat and sunscreen if the weather is hot. A dry day is needed and the day may have to be changed but we will keep you informed. Of course if it is a total fire ban day we will not be harvesting. The park is looking spectacular after all the rain and we hope to see you.

Recently the museum was donated some Australian Women's Weekly magazines from 1932 and along with some very interesting stories, are some fascinating old advertisements, such as the one here. How many of us can recall our grandparents if not our parents using such an appliance and wouldn't it be great to be able to run today's equivalent for 1 cent?



To cater for the increase in patronage to the park over the summer, once again the museum will be open on Saturdays between 11.00am and 3.00pm. We understand that Wednesdays and Sundays may not be suitable for a lot of people and hopefully Saturday openings will help. The museum will not be open however on Christmas Day, New Years Day and the week- end of 28th/29th December due to family commitments for a number of the volunteers. We apologise if this causes any inconvenience.

Did you know ?

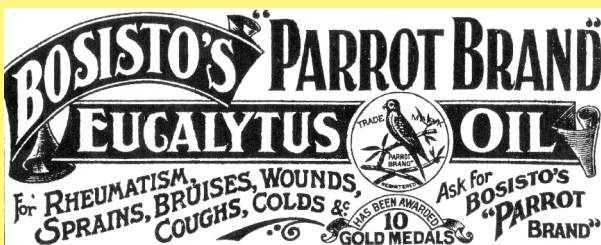
Joseph Bosisto, well known pioneer of the commercial eucalyptus distilling industry in Victoria, began distilling eucalyptus oil from the common peppermint gum in the 1850's. By the 1860's he was exporting eucalyptus oil to Europe, having established his first still on the Dandenong Creek.

Around 1874 he established a still in the Macclesfield area near Smith's Creek.



Distilling eucalyptus at what is now Butterfield Park - circa 1916

His example was soon followed by others in the district, among them Herbert Clark, Absalom Watson and the Legg family. Bosisto became a partner of the major distilling firm, Felton and Grimwade in 1882 who later took over the operation of Bosisto's still, which was producing oil into the 1920's.



Russell Grimwade, on behalf of Felton, Grimwade and Bosisto, promoted a research farm at Emerald in 1911, planting Camden Woolbut trees on what became part of the Emerald Country Club site.

An avenue of that species in Lakeside Drive, Emerald and another group off Mary Street, Emerald are believed to be the remnants of this plantation. The distilled oil was sent to Melbourne for refining and bottling. The pharmaceutical firm Felton Grimwade took over the marketing of the finished product and Bosisto's Parrot Brand Eucalyptus Oil soon became a household name and won several international awards.

Emerald and District Museum has a great deal of history within it's walls, covering local business, people and their lifestyles. However we are always on the lookout for those untold stories that may be hidden within your own walls.

Just because you didn't come from a family that may have been held in high esteem within the community, doesn't mean that your story is less worthy or interesting. It takes a great many people to create a community and we are interested in every person's story of how life was for them in days gone by. You may even be able to help fill in the gaps of the stories we already have.

Next year we are hoping to breathe some new life into the museum with additional displays from other towns in the district. If you have anything of interest you believe could be of assistance, please contact the museum staff who will be more than willing to listen.

What is it ?

Occasionally we discover some very unusual items during our cataloguing sessions in the museum and we need to do some extensive research to find out what it is and used for.

Here is one such example, although we now know what it is. If you came across something such as this, would you have a clue of its use and origin? The answer will be in our next newsletter.



Don't forget our new opening hours over the summer months:

Wednesday - 10.00am - 2.00pm

Saturday - 11.00am - 3.00pm

Sunday - 1.30pm - 4.00pm

except on days of total fire ban or code red.

The committee would like to wish everyone a very Merry Christmas along with a Safe and Prosperous New Year. We would also like to express our sincere thanks to the Red Box Cafe for their support throughout the year.

Emerald Museum
Crichton Road, Emerald, Victoria
P.O. Box 578 Emerald Vic. 3782
Tel. (03) 59682152.
web: emeraldmuseum.org.au
e-mail: enquiries@emeraldmuseum.org.au